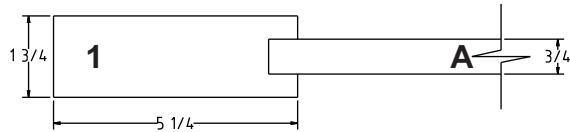
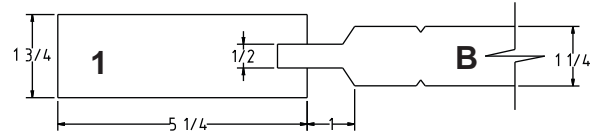


© 2009 Handcrafted - Millworks All Rights Reserved

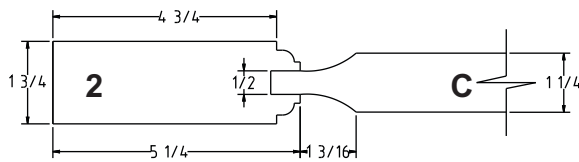
CRAFTSMAN, ALASIO = 1A



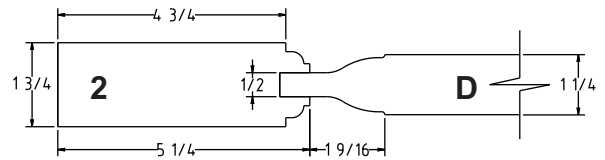
BORDEAUX = 1B



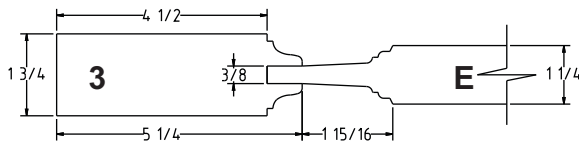
LEXINGTON = 2C



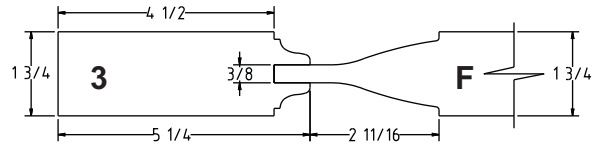
FAIRMONT = 2D



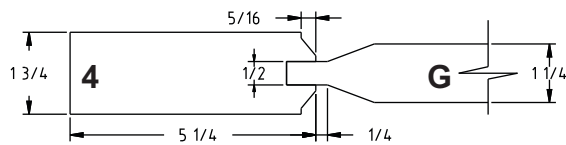
TUSCANY = 3E



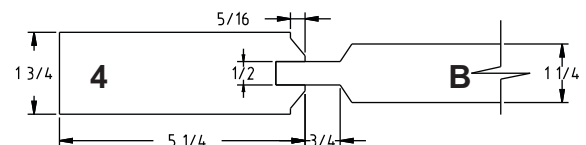
PALLERMO = 3F (This panel detail only is a Senior Panel 1-3/4" thick)



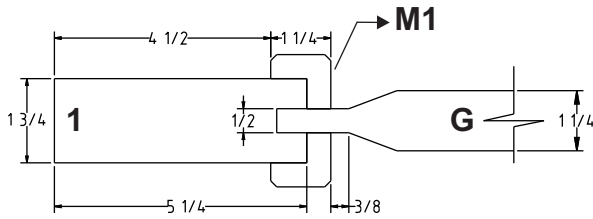
CLASSIC = 4G



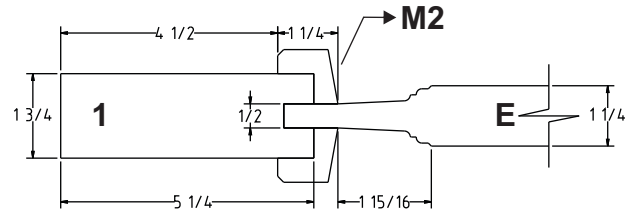
CLASSIC = 4B



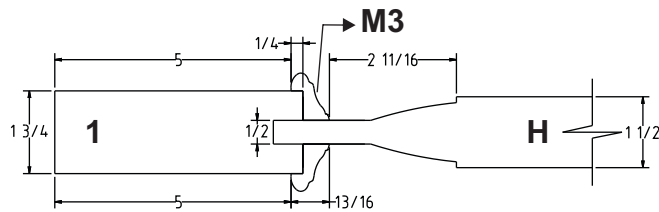
HACIENDA = 1G-M1



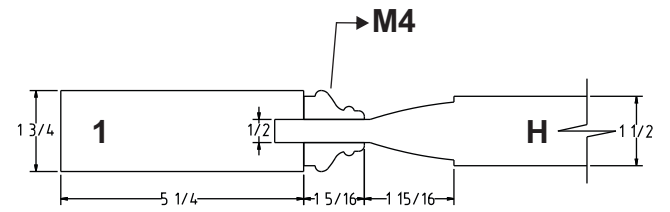
CAPRI = 1E-M2



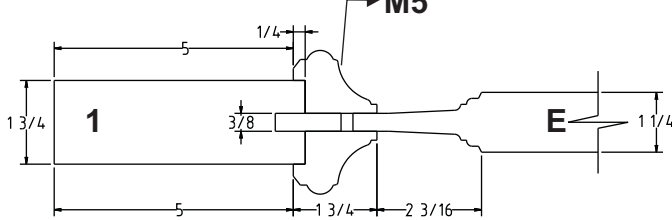
SEVILLA = 1H-M3



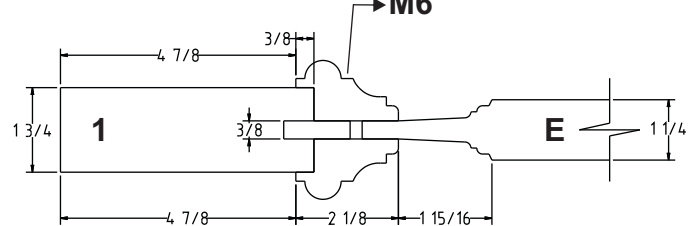
VENTANA = 1H-M4



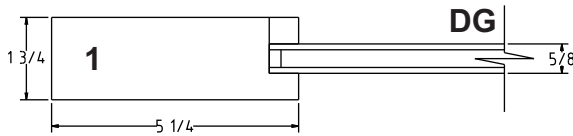
MADRID = 1E-M5



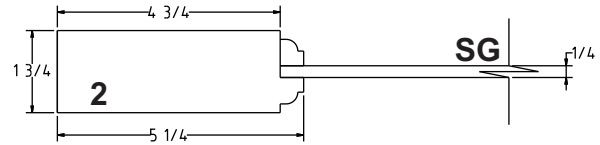
MAJORCA = 1E-M6



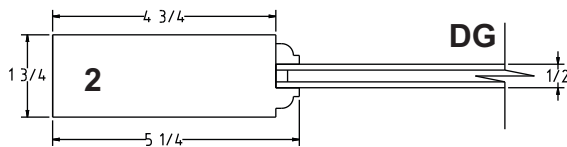
CRAFTSMAN, ALASIO = 1-DG



LEXINGTON = 2-SG



LEXINGTON = 2-DG



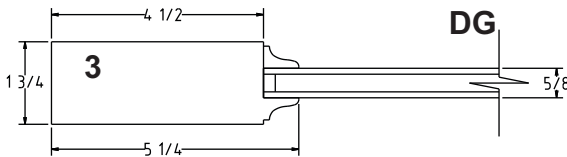
FOR SINGLE GLAZE GLASS
USE STICKING # PLUS "SG"

EXAMPLE

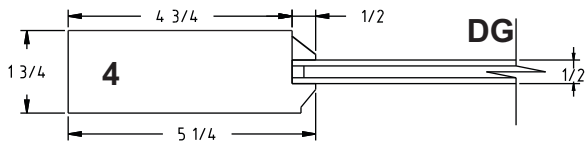
2-DG = LEXINGTON STICKING RAIL
WITH DUAL GLAZE GLASS

2-SG = LEXINGTON STICKING RAIL
WITH SINGLE GLAZE GLASS

TUSCANY = 3-DG



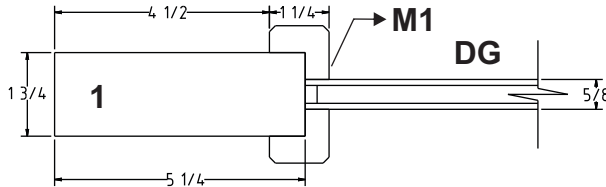
CLASSIC = 4-DG



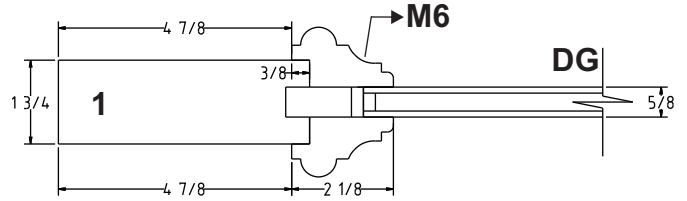
GLASS DOORS STICKING 1-3/4" THICK DOORS DUAL GLAZE OR SINGLE GLAZE TEMPERED GLASS

© 2009 Handcrafted - Millworks All Rights Reserved

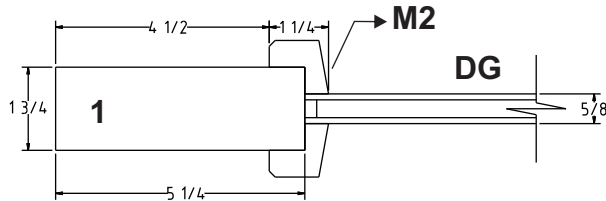
HACIENDA = 1-M1-DG



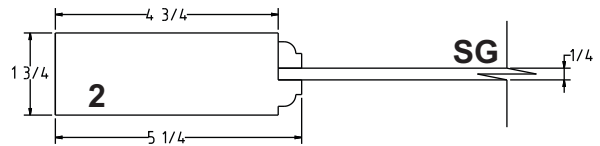
MAJORCA = 1-M6-DG



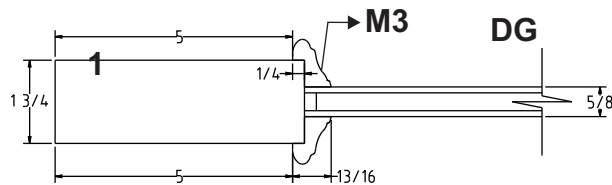
CAPRI = 1-M2-DG



LEXINGTON = 2-SG



SEVILLA = 1-M3-DG



**FOR SINGLE GLAZE GLASS
USE STICKING # PLUS "SG"**

EXAMPLE

**2-DG = LEXINGTON STICKING RAIL
WITH DUAL GLAZE GLASS**

**2-SG = LEXINGTON STICKING RAIL
WITH SINGLE GLAZE GLASS**

MADRID = 1-M5-DG

